



FORNARA S.p.A.

www.fornaraspaspa.it

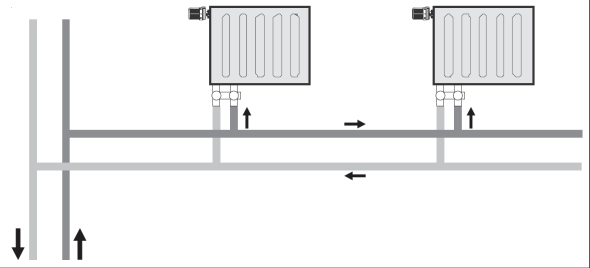
VALVOLE DOPPIE VINCOLATE

236E-E-IT-O / 236E-E-IT-O1

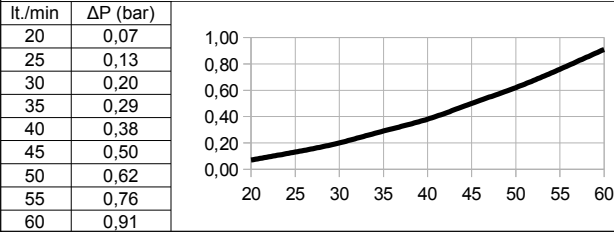
787E-E-IT-O / 787E-E-IT-O1



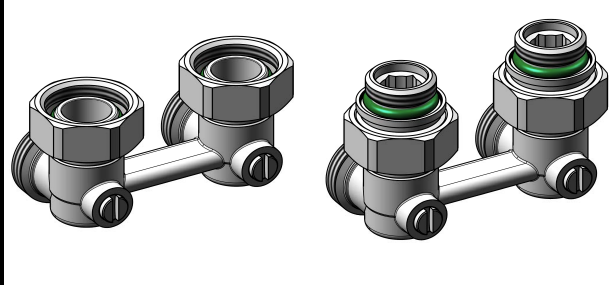
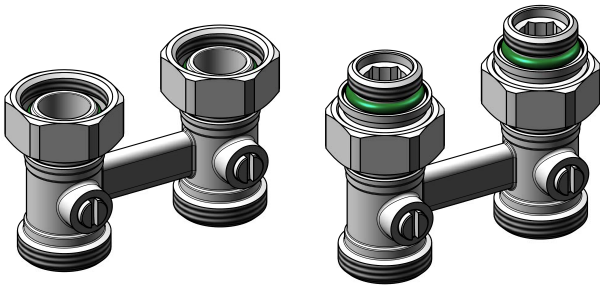
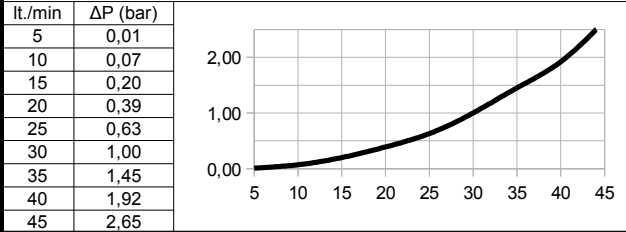
Temperatura 5°C – 120°C
Pressione max 10bar



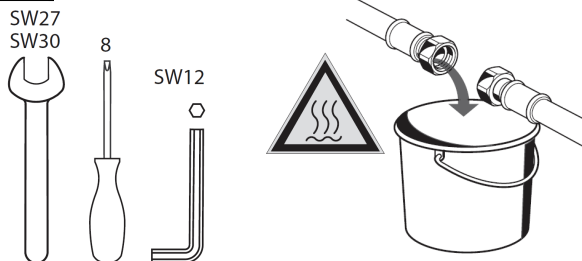
236E-E-IT-O / 236E-E-IT-O1



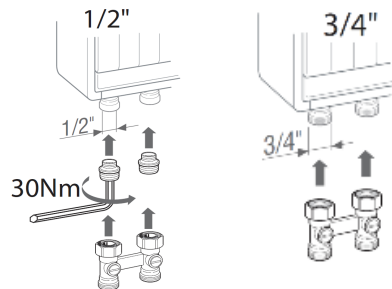
787E-E-IT-O / 787E-E-IT-O1



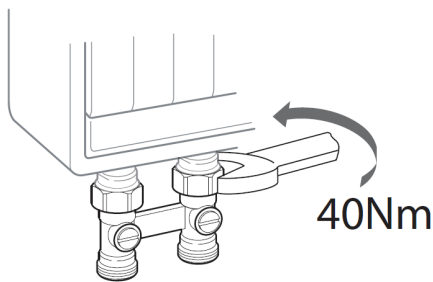
1



2



3



4

